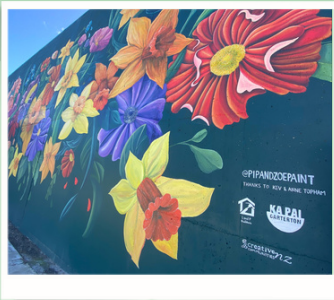


CARTERTON SELF-GUIDED MURALS WALK



Daffodil mural

Location: Corner of Holloway & High St (SH2)

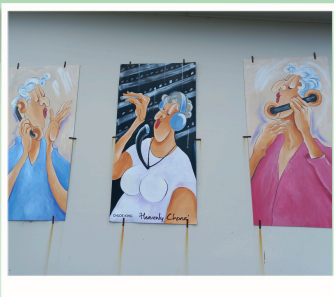
Artists: Pippa and Zoe

A bright floral mural with connections to the Daffodil Festival & brightening up a building site fire.

Carterton Train Station

Location: Corner Holloway St & Nelson Cres.

Artist: Adrian Jackman



Heavenly Chorus

Location: On the Chorus building, behind the Clock Tower, High St

Artist: Chloe King (painted by Wai Art)

“Two matrons having a chat through an-old fashioned telephone exchange, with the telephone operator eavesdropping”.

Carterton mural

Location: High Street (opposite the Clock Tower)

Artist: Max Baylis

Sponsored by Resene and Wai Art Trust

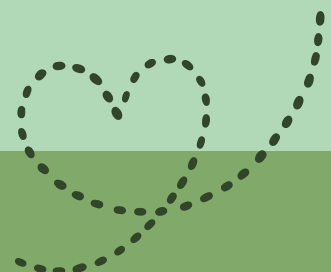


Wairarapa Memories

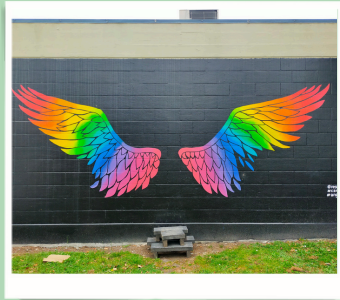
Location: High Street (opposite the Clock Tower)

Artist: Max Baylis

Sponsored by Resene and Wai Art Trust



CARTERTON SELF-GUIDED MURALS WALK

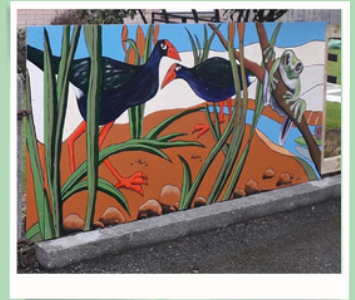


Angel Wings

Location: Holloway Street (behind the Police Station)
Created by Anna-Marie Kingsley and Mike Osborne,
sponsored by Resene and Wai Art Trust

Haumanu House

Location: Behind the Clock Tower / Police Station
Haumanu House is the location for Carterton Foodbank,
Wairarapa Herb Society, Youth 2 Work & the Community Garden /
Ngahere o Te Ora.



Together we Grow

Location: Haumanu House (behind the
Police Station, Holloway St
With the word 'love' in 74 different
languages

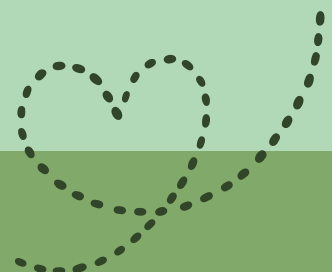
Past, Present & Future

Location: Haumanu House (behind the Police
Station, Holloway St)
Artist: Rangatahi Tū Rangatira (R2R)



Haumanu House / I Love Carterton

Location: Haumanu House (behind the Police
Station, Holloway St)



CARTERTON SELF-GUIDED MURALS WALK

Daffodil Girl

Location: Carrington Park.

Artist: Adrian Jackman



R2R!

Location: Carrington Park.

Artist: Rangatahi Tū Rangatira (R2R)



Wild Oats Cafe

Location: Corner High St North & Belvedere road

Artist: Artworks



The Artist and the Model, The Musician and the Dancer

Location: High Street North next to
Paper Plus

Artist: Kay Paget



All the Leaves are Brown

Location: High Street North next to Paper Plus

Artist: J.F Crafts

