



Representation Review: Youth Council workshop

Carterton District Council
9 July 2024

Welcome and introductions

What is a Representation Review?

- Statutory requirement for all councils under Local Electoral Act 2001
- Reviews current representation structure
 - How many councillors
 - How are they elected (ward, at large or a mix)
 - If wards – names and boundaries
 - Should there be community boards
- Must be undertaken at least every six years
- Carterton: last reviewed in 2018/19
- New arrangements will apply for local elections in 2025 and 2028
- Process and timeline set down in legislation*
- Public consultation and engagement
- Rights of appeal/objection
- Possible LGC review and final determination

**Local Electoral Act 2001, Local Government Electoral Legislation Act 2023*

Process: preliminary steps

- Process started in July 2023 – workshops with council
- Voting system – First past the post (FPP) or Single transferable vote (STV)
 - FPP = candidate with most votes wins
 - STV = ranking system
 - June 2023: Carterton decided to retain First Past the Post (FPP) for 2025 and 2028 elections
 - Next opportunity to review will be for 2028 elections
- Māori representation
 - Legislation allows council to have a Māori ward
 - Based on population, eligible for one ward/one member
 - Māori ward is based on Māori electoral roll
 - October 2023: Carterton resolved not to establish a Māori ward
 - Next opportunity to review Māori representation would be prior to the 2028 elections
 - New legislation now being introduced to require a poll before establishing Māori ward

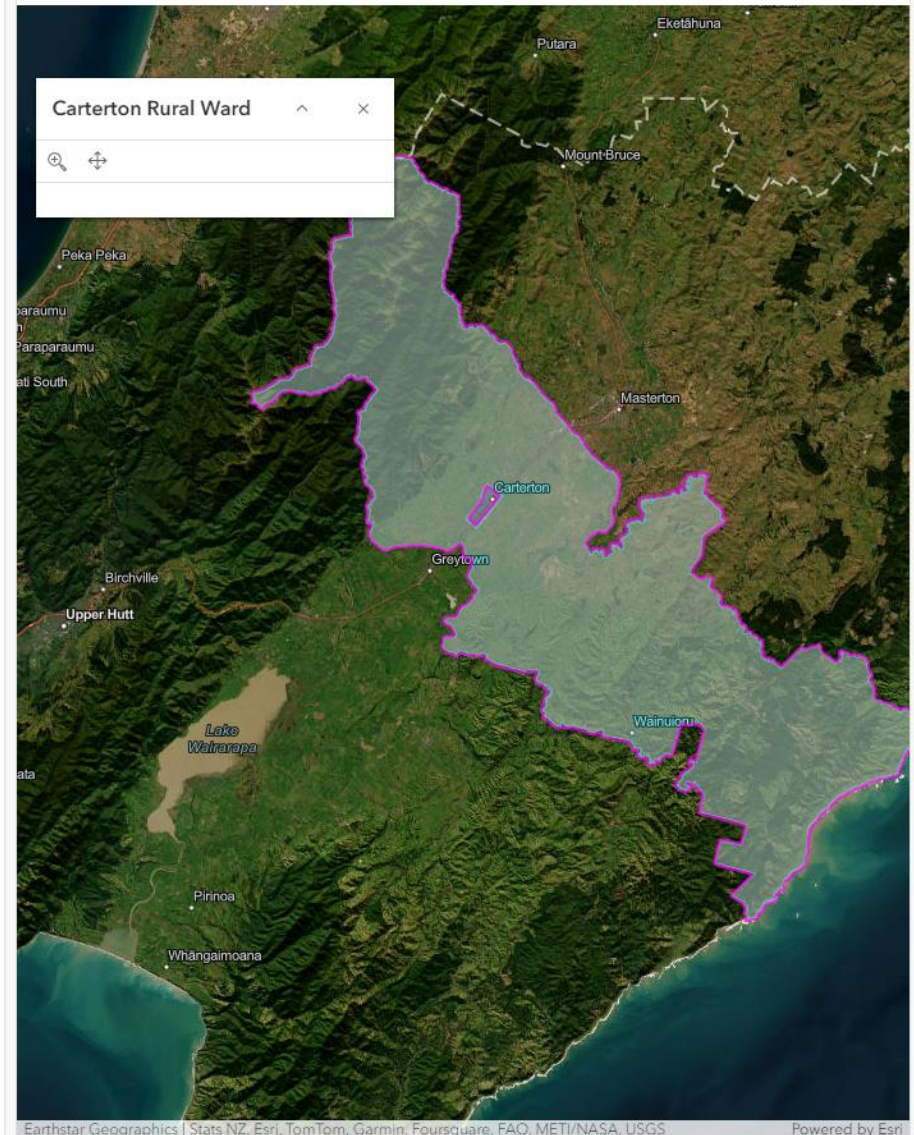
Background – up to 2012

2012 Wards



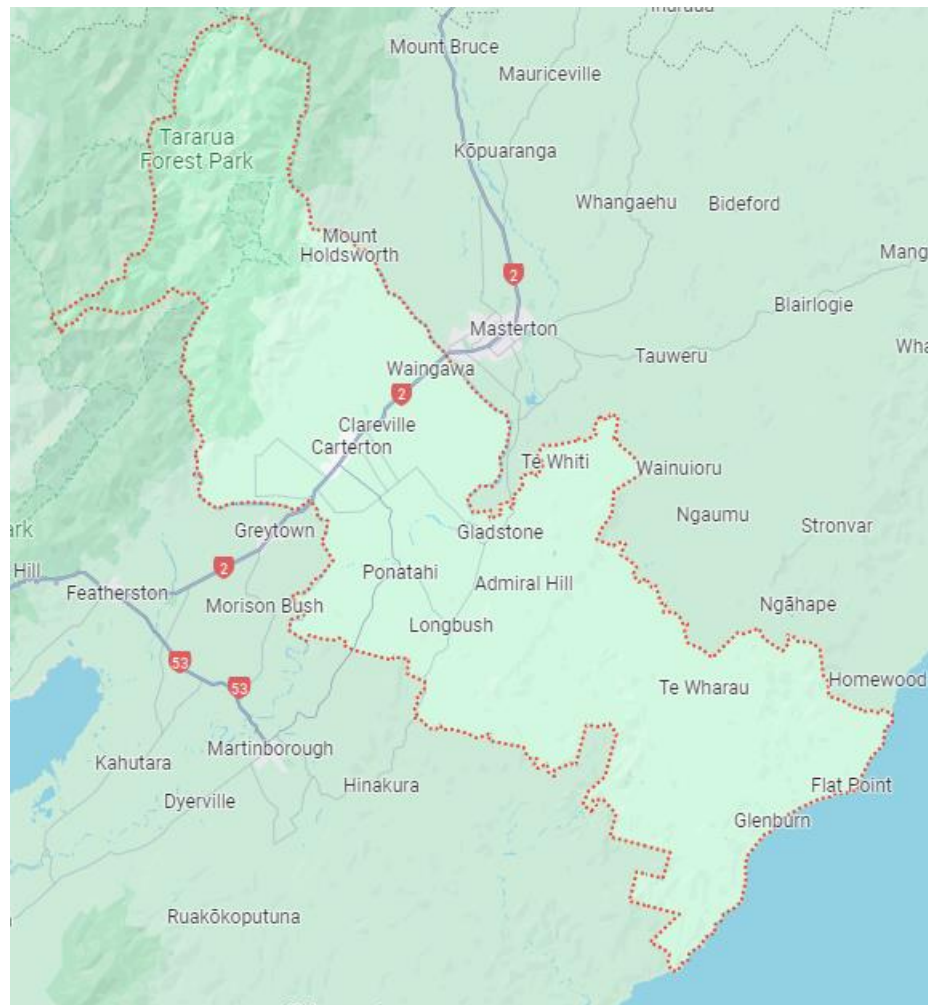
- Carterton originally divided into 4 wards
 - 3 rural (Western, Eastern and Central)
 - 1 urban ward based on the town of Carterton
- Reduced to 2 in 1998
 - Urban and Rural
- Reviewed in 2012: current system put in place

2012 Wards



Current representation

- 8 councillors
- No wards – all councillors are elected at large (across the whole district)
 - All councillors represent all residents
- Plus mayor elected at large
- There are no community boards



Key decisions for Council

- How many councillors
 - How are they elected (ward, at large or a mix)
 - If wards – how many, names and boundaries
 - Should there be community boards
-
- These have been discussed through a series of councillor workshops
 - Council has also undertaken preliminary consultation

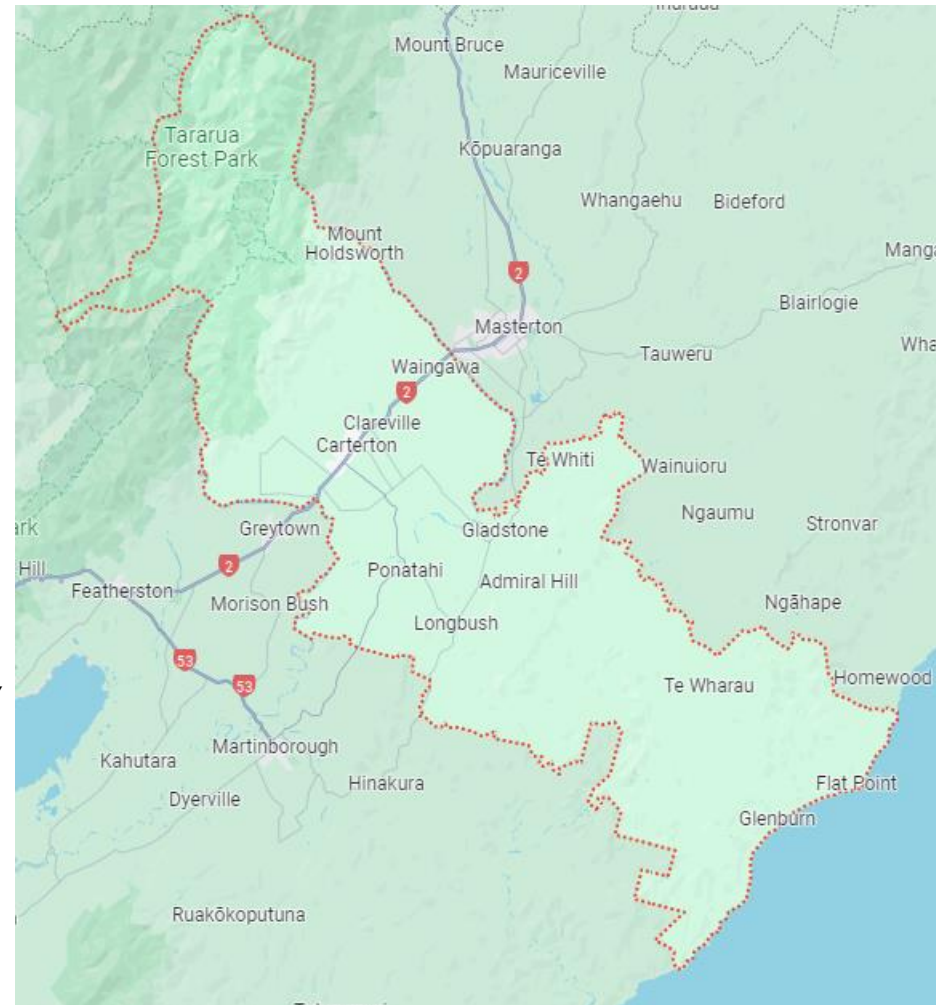
Key principles

Three key concepts:

- Communities of interest
 - Identify what communities of interest exist across the district
 - Perceptual, functional, political dimensions
 - Relevant to determining the **number and boundaries of wards**
- Effective representation of communities of interest
 - What's the best structure to maintain access and representation that recognises these communities of interest?
 - Relevant to determining **number of members**
 - Relevant to determining the **basis of election**: by wards, at-large, or a mix of both
- Fair representation of electors
 - +/- 10% requirement: Population of each ward, divided by number elected members, must be within +/- 10% of the population of the district, divided by total number of elected members
 - Ensure that all votes are of approximately equal value, unless there are good grounds for exception (these are set out in legislation, LEA s.19V(3))
 - Relevant for ensuring equality of representation per member

Communities of interest

- Representation should reflect communities of interest
- Does the current at-large system provide effective representation for the district's communities of interest?
- Are there specific communities of interest that are not being effectively represented?
- Elections are currently at large:
 - *a shared, common community of interest at the district level, and/or*
 - *communities of interest that are spread across the district rather than being geographically distinct*



THREE SYSTEMS

(example of a Council with 13 Councillors)

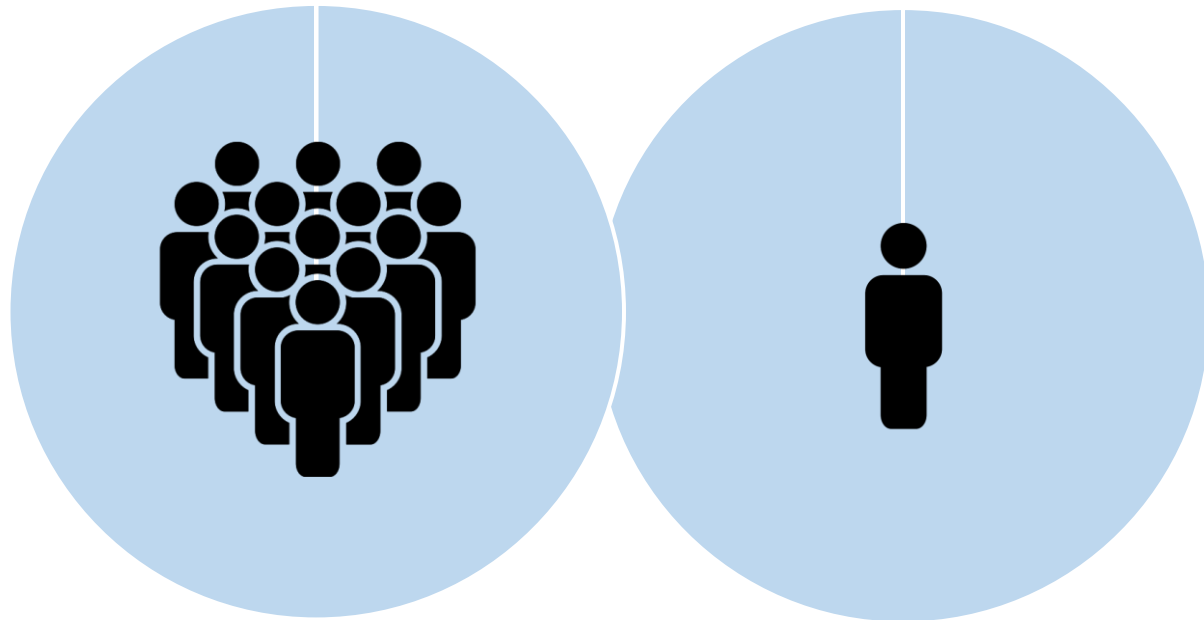
- All electors get 1 vote for Mayor
- PLUS n votes for the total number of Councillors in the district

1. AT-LARGE

ALL Councillors
elected AT LARGE
(voted by ALL people enrolled in the
district)

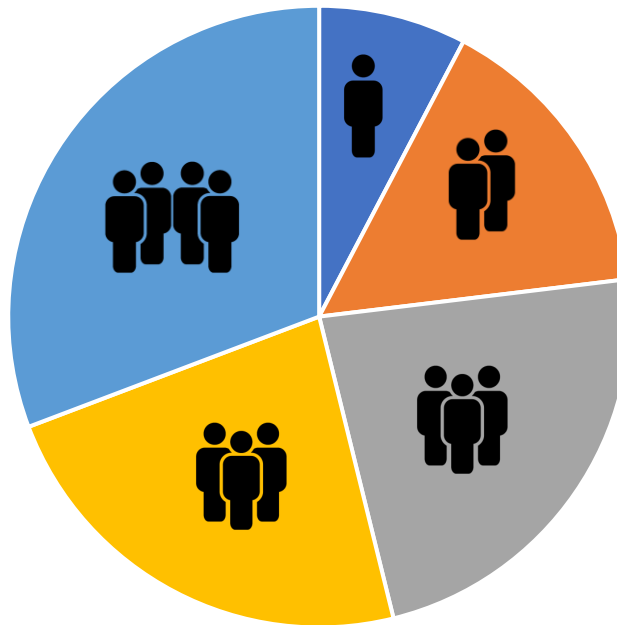
Note:
Mayor is ALWAYS elected at large

Examples:
Kawerau, Upper Hutt, Invercargill,
Dunedin, Kaikoura, Whanganui



2. WARDS

Councillors
elected by WARD
(voted by people enrolled in
each Ward)



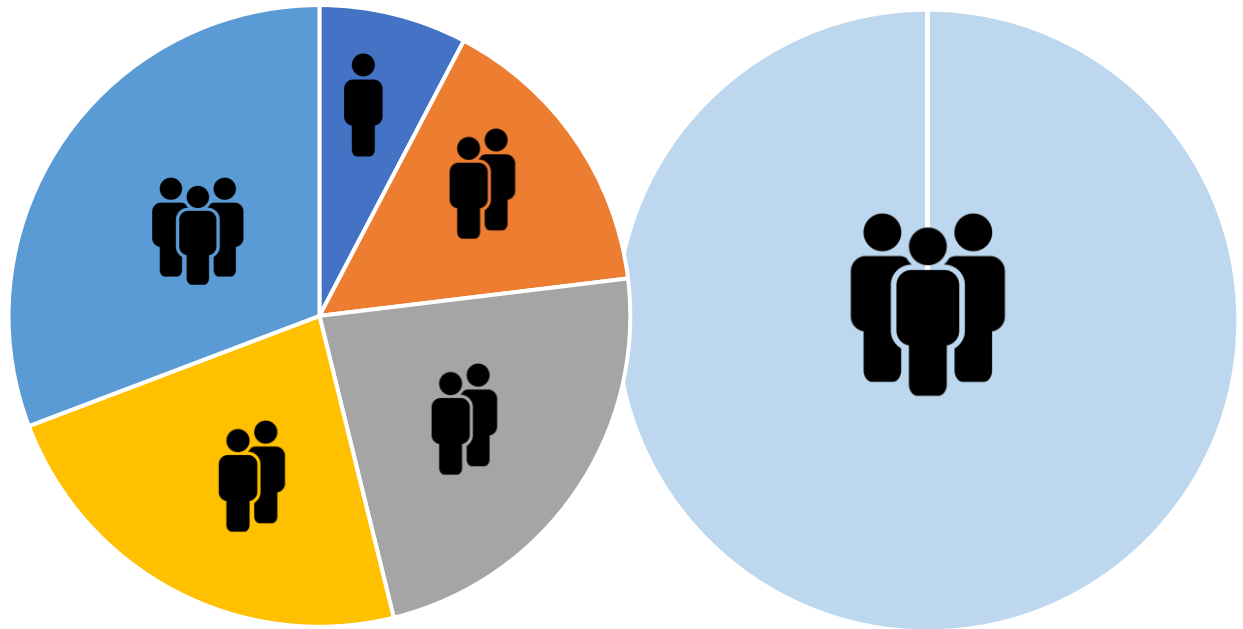
- All electors get 1 vote for Mayor
- PLUS n vote/s for the number of Councillors in their Ward

3. MIXED: WARDS AND AT-LARGE

Some Councillors
elected by WARD
(voted by people enrolled in each
ward)
PLUS
Some Councillors elected at large
(voted by ALL people enrolled in
the district)

Examples:
Nelson, New Plymouth, Gore, Lower
Hutt, Kapiti Coast

- All electors get 1 vote for Mayor
- PLUS n vote/s for the number of councillors in their Ward
- PLUS n votes for councillors elected at-large (across district)



Effective representation

- **Number of Councillors**

- Is the overall number of Councillors appropriate?
 - Legislation allows for between 5 and 29 members
- Does this number enable effective representation of communities?
- Should we consider having more/fewer?

Note: How does Carterton compare to other similar-size councils (5-20,000)?

District (Popn. 20-30,000)	Population	No. of Councillors	Basis of election
Otorohanga	11,000	9	Wards
Waitomo	9,720	6	Wards
Kawerau	7,820	8	At-large
Wairoa	9,290	6	Wards (1Gen. 1M)
Stratford	10,300	11	Wards (Urb/Rur/Māori)
South Wairarapa	11,870	9	Wards (+MW in 2025)
Grey	14,260	8	Wards
Buller	9,680	10	Wards
Hurunui	13,800	10	Wards
Waimate	8,400	8	Wards
Gore	13,050	11	Mix – Wards/At-large
Carterton	10,250	8	

Effective representation

- **Number of Councillors**

- Is the overall number of Councillors appropriate?
 - Legislation allows for between 5 and 29 members
- Does this number enable effective representation of communities?
- Should we consider having more/fewer?

Note: How does Carterton compare to other similar-size councils (5-20,000)?

District (Popn. 20-30,000)	Population	No. of Councillors	Basis of election
Otorohanga	11,000	9	Wards
Waitomo	9,720	6	Wards
Kawerau	7,820	8	At-large
Wairoa	9,290	6	Wards (1Gen. 1M)
Stratford	10,300	11	Wards (Urb/Rur/Māori)
South Wairarapa	11,870	9	Wards (+MW in 2025)
Grey	14,260	8	Wards
Buller	9,680	10	Wards
Hurunui	13,800	10	Wards
Waimate	8,400	8	Wards
Gore	13,050	11	Mix – Wards/At-large
Carterton	10,250	8	

Fair representation: +/-10% requirement

- Helps ensure approximate equality of vote per member
- Membership of wards ... is required to provide approximate population equality per member, that is, all votes are of approximately equal value ... unless there are good (prescribed) reasons to depart from this requirement (LGC Guidelines 5.29)
- Example:
 - in a district of 10,000 population with 10 councillors
 - each councillor would represent 1,000 people
 - if you divide the district into wards, each councillor must still represent approx. 1,000 people (+/-10%)
- Doesn't apply in a fully at-large arrangement
- If wards were to be established in Carterton, the +/-10% rule would apply

Carterton District	Population	Members	Population-member ratio
At large	10,250	8	1,281

[illegible]

A map of the Lake Umbagog watershed area, divided into three colored wards. The Green ward (top left) has a population of 2,040. The Yellow ward (middle) has a population of 5,960. The Red ward (bottom right) has a population of 7,270. The map shows the Connecticut River flowing through the area, with Lake Umbagog to the west. Towns labeled include Milltown, Middlebury, Wardsboro, and Wardsboro. The map also shows the state boundary between Vermont and New Hampshire.

[illegible]

Community Boards

- Why do we have Community Boards?
 - “Community boards typically represent a smaller area within their council/kaunihera, to ensure smaller communities’ voices aren’t lost in the big picture conversations/kōrero” (LGNZ)
 - Local functions are set through Delegations
- Requirement to review:
 - How many?
 - Boundaries
 - How many members (legislation allows for between 4 and 12)?
 - How many appointed members (must be less than half)?
 - Should there be subdivisions?
- Would Community Board/s helping to achieve effective representation?
- Do we consider engaging with community on establishing one or more new Community Boards, eg
 - Rural – what boundaries?

Preliminary consultation - May

- Not a statutory process, but recommended
 - Opportunity to seek views of community on possible options or changes
 - Provide information on what the Representation Review is about
 - Provide information on process and timeline, and how people can contribute
 - Provide information on any possible changes and impacts
- Range of methods including online, surveys etc
- Councillors can engage with own communities
- Feedback to Council helps to inform its decision on the Initial Proposal
 - Note: Initial Proposal will be a single option – Council's preferred option
 - Initial Proposal will be open for formal consultation

Preliminary consultation – 3 options



CHANGE?

SAME?

It's up to you

Have your say on the future representation of Carterton

CARTERTON
DISTRICT COUNCIL

Representation Review: It's up to you.

Have your say on the future representation of Carterton.

We want your ideas on the future of representation in Carterton. We need to ensure there is fit-for-purpose, fair, and effective representation for individuals and communities of interest in our District, and that they have their voices heard at Council level.



A Representation Review is a statutory requirement for all councils and must be done every six years.

The Review includes community consideration of Council representation arrangements, number of wards, ward boundaries, number of elected members, and the establishment of community boards.

We have three options for your feedback



Maintain the status quo: eight Councillors elected At Large [to represent the District as a whole.]



or....

- An "urban" ward with five Councillors, and
- A "rural" ward of three Councillors

or....

- One "urban" ward with three Councillors
- Rural [two councillors]
- Three "At Large" councillors.



However, we also want to hear how you feel you are being represented.

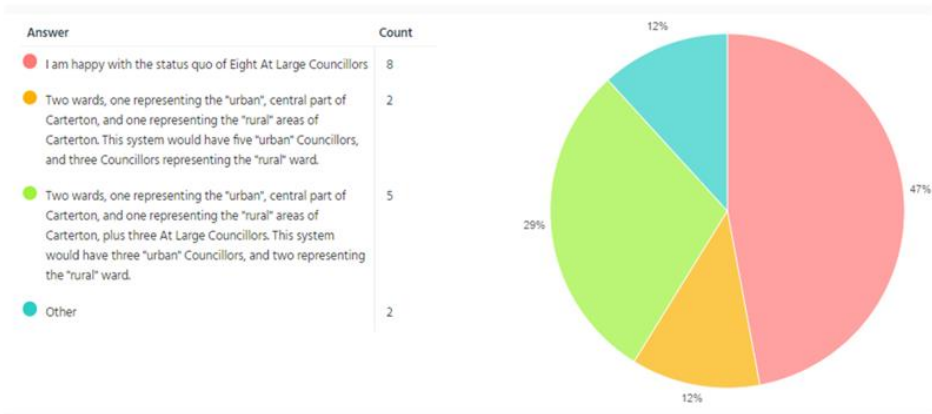
We welcome your feedback and ideas on our representation arrangements.

Visit cdc.govt.nz/representationreview2024 to find out more and have your say before **Sunday 26 May**.

Preliminary consultation

Survey Results

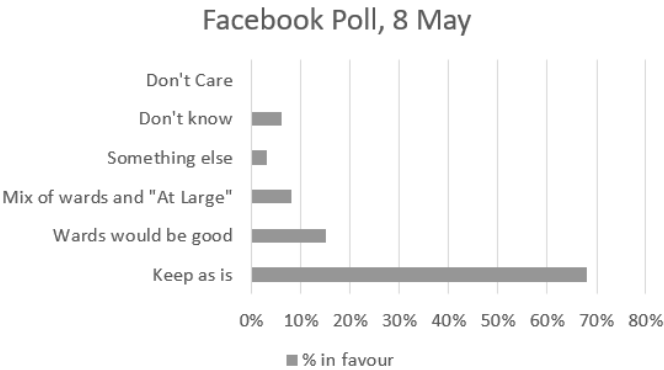
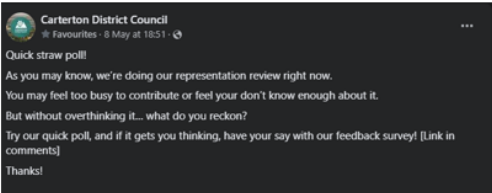
- ◆ Here are some options we could consider to use in Carterton. Let us know which you prefer, or suggest something else.
 - Two wards, one representing the "urban", central part of Carterton with five "urban" Councillors, and one representing the "rural" areas of Carterton, with three Councillors.
 - Two wards, one representing the "urban", central part of Carterton, and one representing the "rural" areas of Carterton, plus three At Large Councillors.



Preliminary consultation

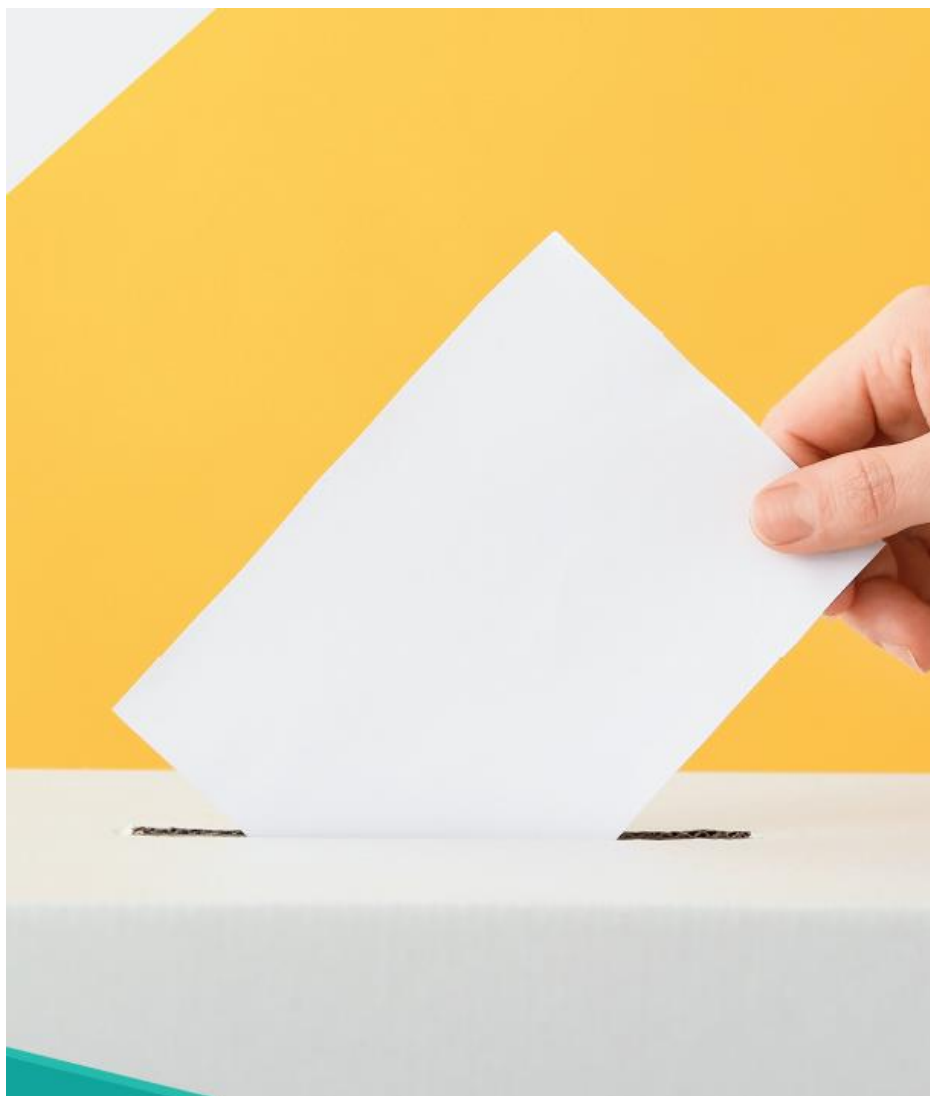
Informal Facebook Poll, 8 May

- ◆ CDC held an informal Facebook poll held on evening of 8 May. We received 110 votes. The percentage returns were as follows:



Council's initial proposal

- Adopted for consultation on 26 June
 - **(a) That the Carterton District Council comprises the Mayor and eight (8) Councillors, all elected at large.**
 - **(b) That no community boards are established.**
- Retains status quo arrangements
- Open for public consultation until Sunday 4 August
 - Written submissions
 - Anyone can make a submission
 - People can choose to present their submission in person at hearings
 - Hearings will be held 20 August
- After hearing submissions Council can confirm its initial proposal, or make changes
- Final proposal to be notified by 4 October
- Open to appeals and objections until 3 December



REPRESENTATION REVIEW

STATEMENT OF PROPOSAL

JULY 2024

How do I find out more?



Online

- www.lgc.govt.nz/our-work/representation-reviews
- www.cdc.govt.nz/representationreview2024



Phone

06 379 4030



Email

dem.services@cdc.govt.nz

How do I have my say?



Complete one of our online submission forms at:
www.cdc.govt.nz/representationreview2024



Complete the paper submission form at the end
of this document, or from our Council office at
28 Holloway Street, Carterton



Email your submission or feedback to:
submissions@cdc.govt.nz



Post your paper copy to
PO Box 9, Carterton, 5743

electionz.com
voting made easy



Thank You

Questions?