

Greenhouse gas emissions Dashboard – February 2022



TE KAUNIHERA-Ā-ROHE O TARATAHI
CARTERTON
DISTRICT COUNCIL



SOUTH WAIRARAPA
DISTRICT COUNCIL
Kia Rereahi Tātau



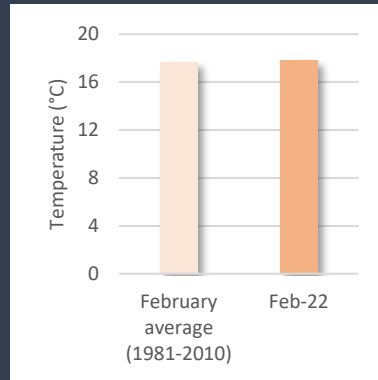
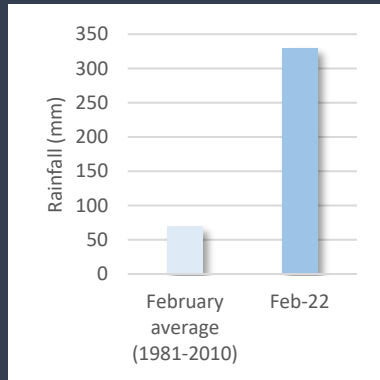
Climate data

Earth's average temperature in February 2022 compare to 1951-1980 data: **+0.89°C**



Masterton, February 2022 (main weather station in the Wairarapa):

- Average rainfall compare to 1981-2010: **+261mm**
- Average temperature compare to 1981-2010 : **-0.4°C**



Did you know?

Weather and climate are two different things. Weather is what conditions of the atmosphere are over a short period of time, and climate is how the atmosphere "behaves" over relatively long periods of time.



Electric Vehicles (EV)

- EV fleet in the Wairarapa February 2022 : 382 ~ +3.8%
- EV fleet in the Wellington region in February 2022 : 5,871 ~ +5.7%
- EV fleet in New Zealand in February 2022 : 39,271 ~ +3,9%

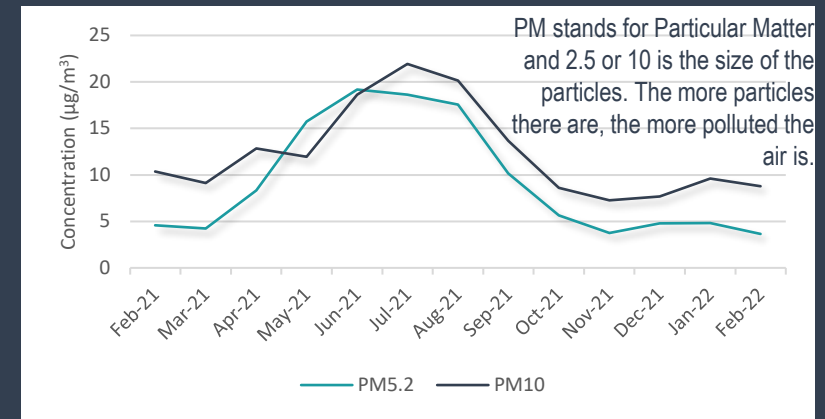
Compare to previous month



Air quality

Masterton, February 2022 (main air quality station in the Wairarapa):

- PM2.5: 3.67 $\mu\text{g}/\text{m}^3$ – 0 day exceed WHO guidelines ($>25 \mu\text{g}/\text{m}^3$)
- PM10: 8.79 $\mu\text{g}/\text{m}^3$ – 0 day exceeds WHO guidelines ($>50 \mu\text{g}/\text{m}^3$)



Electricity

Power consumption (South Wairarapa and Carterton Districts) in February 2022 :

- Streetlight: 24,000 kWh \approx 36 houses power consumption⁴
- Water supply: 81,000 kWh \approx 125 houses
- Wastewater: 79,000 kWh \approx 122 houses

One house of 4 people consumes about 650 kWh per month

Greenhouse gas emissions from electricity in February 2022 :

- 20.1 tCO₂e \approx 86 return flights between Wellington and Auckland

